



Tenco Services, Inc

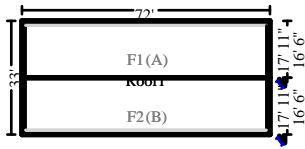
8245 Tournament Drive, Suite 250
 Memphis, TN 38125

DESCRIPTION	QTY
9. Tear off, haul and dispose of comp. shingles - 3 tab	20.74 SQ
10. 3 tab - 25 yr. - comp. shingle roofing - w/out felt	24.00 SQ
11. Roofing felt - 15 lb.	20.74 SQ
12. Hip / Ridge cap - composition shingles	58.00 LF
13. Roof vent - Detach & reset	6.00 EA
14. Flashing - pipe jack	2.00 EA
15. Exhaust cap - through roof - 6" to 8"	2.00 EA
16. Drip edge	187.50 LF
17. Flashing, 14" wide	20.00 LF

NOTES:

604-606
Main Level

Roof1



2574.00 Surface Area	25.74 Number of Squares
215.50 Total Perimeter Length	72.00 Total Ridge Length

DESCRIPTION	QTY
18. Tear off, haul and dispose of comp. shingles - 3 tab	25.74 SQ
19. 3 tab - 25 yr. - comp. shingle roofing - w/out felt	29.67 SQ
20. Roofing felt - 15 lb.	25.74 SQ
21. Hip / Ridge cap - composition shingles	72.00 LF
22. Roof vent - Detach & reset	7.00 EA
23. Flashing - pipe jack	2.00 EA
24. Exhaust cap - through roof - 6" to 8"	2.00 EA
25. Drip edge	215.50 LF
26. Flashing, 14" wide	20.00 LF



Tenco Services, Inc

8245 Tournament Drive, Suite 250
Memphis, TN 38125

CONTINUED - Roof1

DESCRIPTION

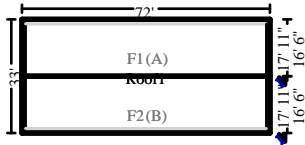
QTY

NOTES:

608-610

Main Level

Roof1



2574.00 Surface Area
215.50 Total Perimeter Length

25.74 Number of Squares
72.00 Total Ridge Length

DESCRIPTION

QTY

27. Tear off, haul and dispose of comp. shingles - 3 tab	25.74 SQ
28. 3 tab - 25 yr. - comp. shingle roofing - w/out felt	29.67 SQ
29. Roofing felt - 15 lb.	25.74 SQ
30. Hip / Ridge cap - composition shingles	72.00 LF
31. Roof vent - Detach & reset	7.00 EA
32. Flashing - pipe jack	2.00 EA
33. Exhaust cap - through roof - 6" to 8"	2.00 EA
34. Drip edge	215.50 LF
35. Flashing, 14" wide	20.00 LF

NOTES:

612-614

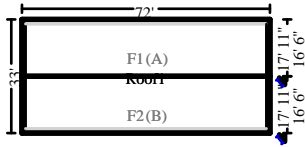


Tenco Services, Inc

8245 Tournament Drive, Suite 250
Memphis, TN 38125

Main Level

Roof1



2574.00	Surface Area	25.74	Number of Squares
215.50	Total Perimeter Length	72.00	Total Ridge Length

DESCRIPTION

QTY

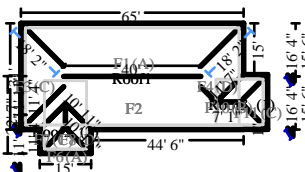
36. Tear off, haul and dispose of comp. shingles - 3 tab	25.74 SQ
37. 3 tab - 25 yr. - comp. shingle roofing - w/out felt	29.67 SQ
38. Roofing felt - 15 lb.	25.74 SQ
39. Hip / Ridge cap - composition shingles	72.00 LF
40. Roof vent - Detach & reset	7.00 EA
41. Flashing - pipe jack	2.00 EA
42. Exhaust cap - through roof - 6" to 8"	2.00 EA
43. Drip edge	215.50 LF
44. Flashing, 14" wide	20.00 LF

NOTES:

608 Fairlane

Main Level

Roof1



2352.73	Surface Area	23.53	Number of Squares
219.96	Total Perimeter Length	54.00	Total Ridge Length
106.07	Total Hip Length		

DESCRIPTION

QTY

45. Tear off, haul and dispose of comp. shingles - 3 tab	23.53 SQ
----------------------------------------------------------	----------



Tenco Services, Inc

8245 Tournament Drive, Suite 250
Memphis, TN 38125

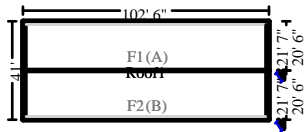
CONTINUED - Roof1

DESCRIPTION	QTY
46. Additional layer of comp. shingles, remove (no haul off)	23.53 SQ
47. 3 tab - 25 yr. - comp. shingle roofing - w/out felt	27.33 SQ
48. Roofing felt - 15 lb.	23.53 SQ
49. Drip edge	219.96 LF
50. Roof vent - Detach & reset	5.00 EA
51. Hip / Ridge cap - composition shingles	54.00 LF
52. Exhaust cap - through roof - 6" to 8"	2.00 EA
53. Flashing - pipe jack	4.00 EA

NOTES:

Shop Main Level

Roof1



4429.82	Surface Area	44.30	Number of Squares
291.44	Total Perimeter Length	102.50	Total Ridge Length

DESCRIPTION	QTY
54. Metal roofing - Detach & reset Re-attach about 1/3 of the metal roof panels that are lifted.	1476.61 SF

NOTES:



Tenco Services, Inc

8245 Tournament Drive, Suite 250
Memphis, TN 38125

700 Broad Street

DESCRIPTION	QTY
55. Fascia - metal - 8"	12.00 LF

NOTES:

730/732 Nash Street

DESCRIPTION	QTY
56. Exhaust cap - through roof - 6" to 8"	1.00 EA
57. Fascia - metal - 8"	12.00 LF

NOTES:

734/736 Nash Street

DESCRIPTION	QTY
58. Exhaust cap - through roof - 6" to 8"	1.00 EA

NOTES:

738/740 Nash Street



Tenco Services, Inc

8245 Tournament Drive, Suite 250
Memphis, TN 38125

DESCRIPTION	QTY
59. Fascia - metal - 8"	10.00 LF
60. Exterior light fixture	1.00 EA

NOTES:

731/733 Nash Street

DESCRIPTION	QTY
61. Hip / Ridge cap - composition shingles	20.00 LF
62. Fascia - metal - 8"	16.00 LF
63. Exterior light fixture	1.00 EA

NOTES:

727/729 Nash Street

DESCRIPTION	QTY
64. Exhaust cap - through roof - 6" to 8"	1.00 EA
65. Fascia - metal - 8"	10.00 LF

NOTES:

723/725 Nash Street



Tenco Services, Inc

8245 Tournament Drive, Suite 250
Memphis, TN 38125

DESCRIPTION	QTY
66. Fascia - metal - 8"	24.00 LF
67. Exterior light fixture	1.00 EA

NOTES:

719/721 Nash Street

DESCRIPTION	QTY
68. Exterior light fixture	2.00 EA

NOTES:

616 Broad Street

DESCRIPTION	QTY
69. Exhaust cap - through roof - 6" to 8"	1.00 EA
70. Exterior light fixture	2.00 EA
71. Fascia - metal - 8"	8.00 LF

NOTES:

612/614 Broad Street

DESCRIPTION	QTY
-------------	-----



Tenco Services, Inc

8245 Tournament Drive, Suite 250
Memphis, TN 38125

CONTINUED - 612/614 Broad Street

DESCRIPTION	QTY
72. 3 tab - 25 yr. - composition shingle roofing (per SHINGLE)	8.00 EA
73. 3 tab - 25 yr. - composition shingle roofing (per SHINGLE)	8.00 EA

NOTES:

604/606 Lafollette

DESCRIPTION	QTY
74. Fascia - metal - 8"	5.00 LF

NOTES:

226 L.P. Miller

DESCRIPTION	QTY
75. 3 tab - 25 yr. - composition shingle roofing (per SHINGLE)	2.00 EA
76. 3 tab - 25 yr. - composition shingle roofing (per SHINGLE)	2.00 EA

NOTES:



Tenco Services, Inc

8245 Tournament Drive, Suite 250
Memphis, TN 38125

302 Pine

DESCRIPTION	QTY
77. Roofer - per hour	2.50 HR
Minor roof repair (including materials needed)	

NOTES:

201 Ash

DESCRIPTION	QTY
78. Exhaust cap - through roof - 6" to 8"	1.00 EA
79. Fascia - metal - 8"	8.00 LF

NOTES:

409/411 Cherry

DESCRIPTION	QTY
80. Exterior light fixture	1.00 EA
81. Roof vent - turtle type - Metal	1.00 EA
82. Roofer - per hour	3.00 HR
Labor and materials to complete minor roof repair.	

NOTES:



Tenco Services, Inc

8245 Tournament Drive, Suite 250
Memphis, TN 38125

200/202 Ash

DESCRIPTION	QTY
83. Roofer - per hour	2.00 HR
Labor and materials to complete minor roof repair.	

NOTES:

700-714 Riley Court

DESCRIPTION	QTY
84. Metal J trim	40.00 LF
85. Fascia - metal - 10"	10.00 LF
86. Exterior light fixture	3.00 EA

NOTES:

717-731 Riley Court

DESCRIPTION	QTY
87. Siding - vinyl	40.00 SF
88. Metal J trim	40.00 LF
89. Fascia - metal - 10"	40.00 LF

NOTES:



Tenco Services, Inc

8245 Tournament Drive, Suite 250
Memphis, TN 38125

629-635 Riley Court

DESCRIPTION	QTY
90. Fascia - metal - 10"	10.00 LF
91. Exterior light fixture	1.00 EA
92. Fascia - metal - 8"	10.00 LF

NOTES:

HVC

DESCRIPTION	QTY
93. Heat, Vent, & Air Conditioning (Bid Item) See attached invoice	1.00 EA

NOTES:

Miscellaneous

DESCRIPTION	QTY
94. Tandem axle dump trailer - per load - including dump fees	1.00 EA

NOTES:



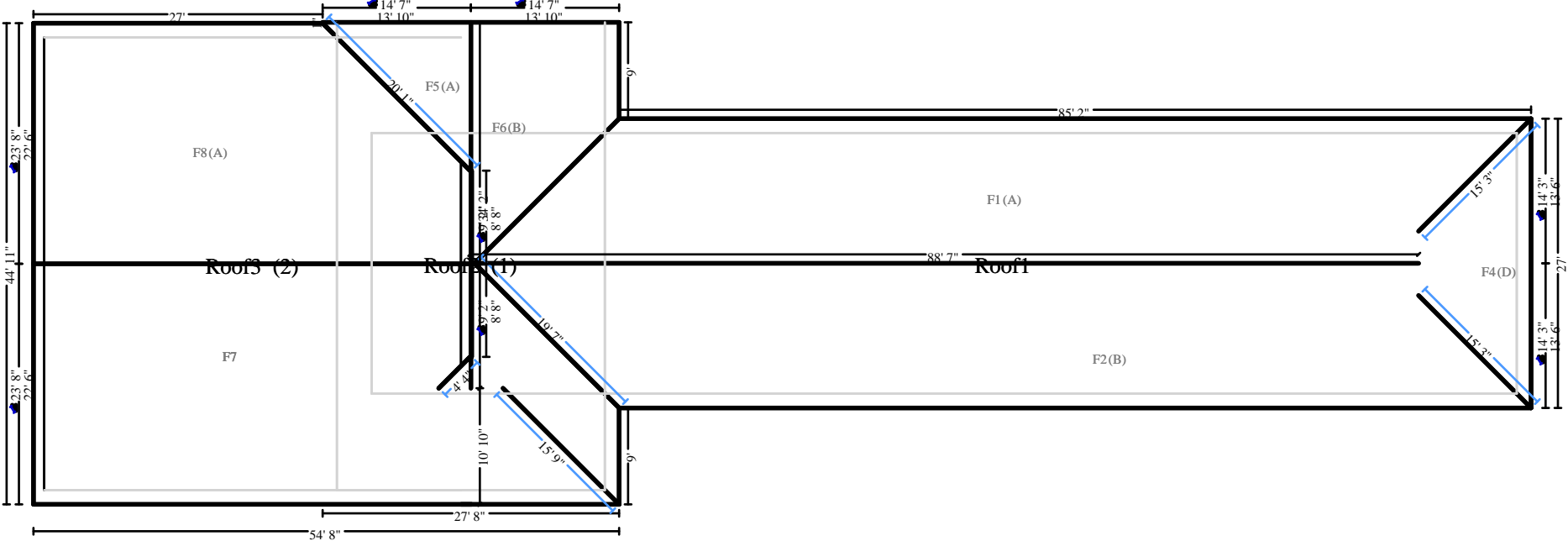
Tenco Services, Inc

8245 Tournament Drive, Suite 250
Memphis, TN 38125

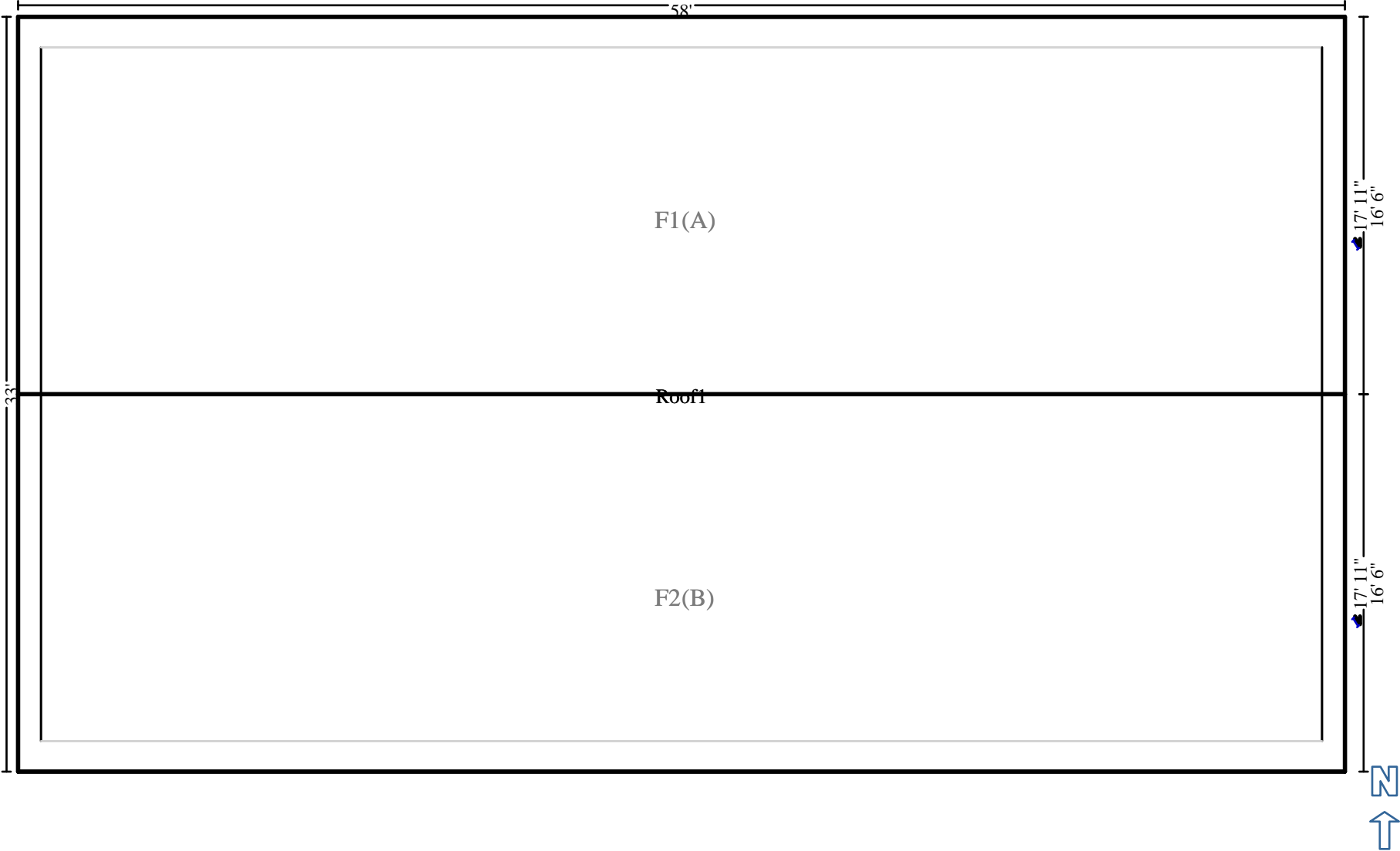
Grand Total Areas:

0.00 SF Walls	0.00 SF Ceiling	0.00 SF Walls and Ceiling
0.00 SF Floor	0.00 SY Flooring	0.00 LF Floor Perimeter
0.00 SF Long Wall	0.00 SF Short Wall	0.00 LF Ceil. Perimeter
0.00 Floor Area	0.00 Total Area	0.00 Interior Wall Area
1,239.93 Exterior Wall Area	0.00 Exterior Perimeter of Walls	
21,612.04 Surface Area	216.12 Number of Squares	1,737.23 Total Perimeter Length
593.72 Total Ridge Length	152.33 Total Hip Length	

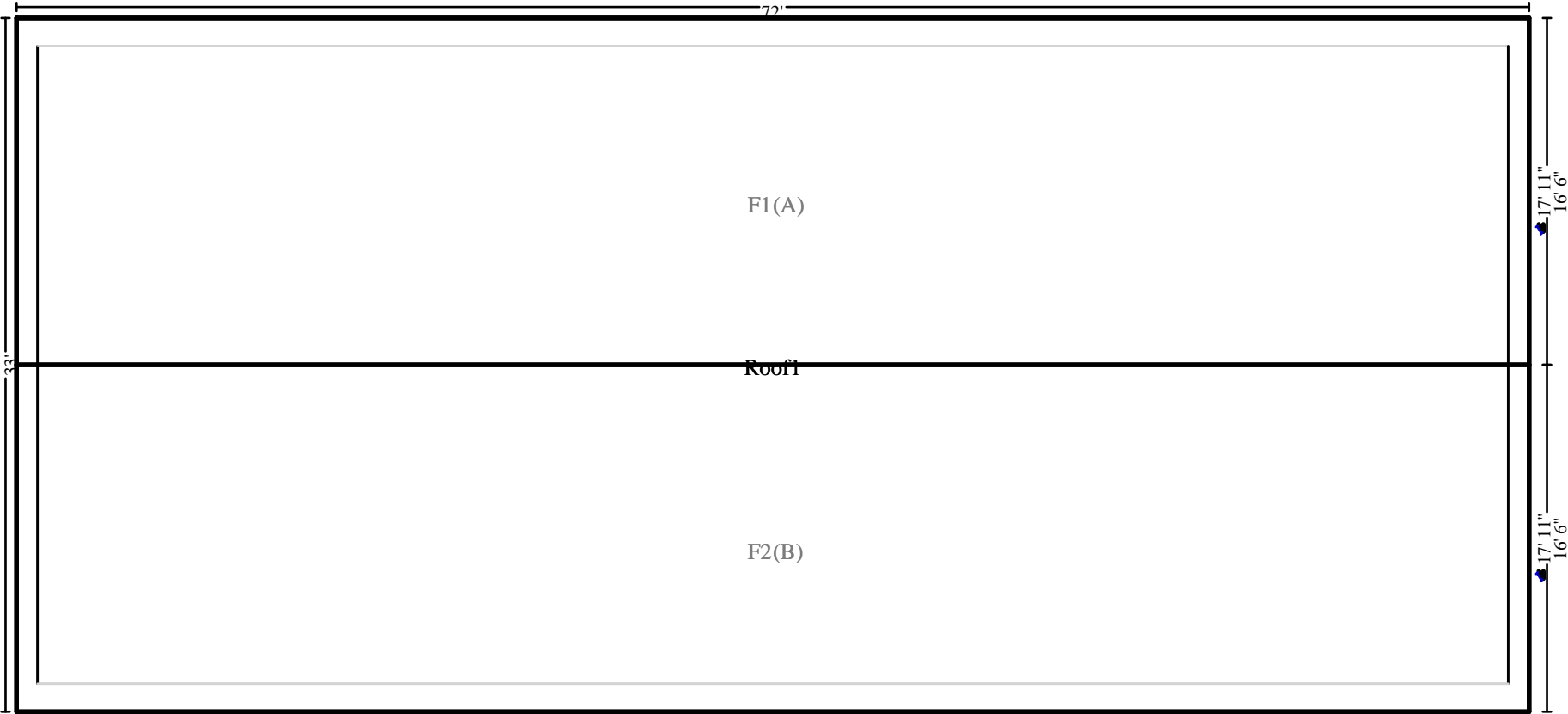
It is the property owner's responsibility to select and hire all repairers (Contractors); however, if you ask and we provide you with names of repairers in your area, it will be your decision if you wish to hire them. Tenco Services, Inc. makes no warranty regarding the work of any repairers. NOR DO WE HAVE ANY AUTHORITY TO HIRE A REPAIRER ON YOUR BEHALF.



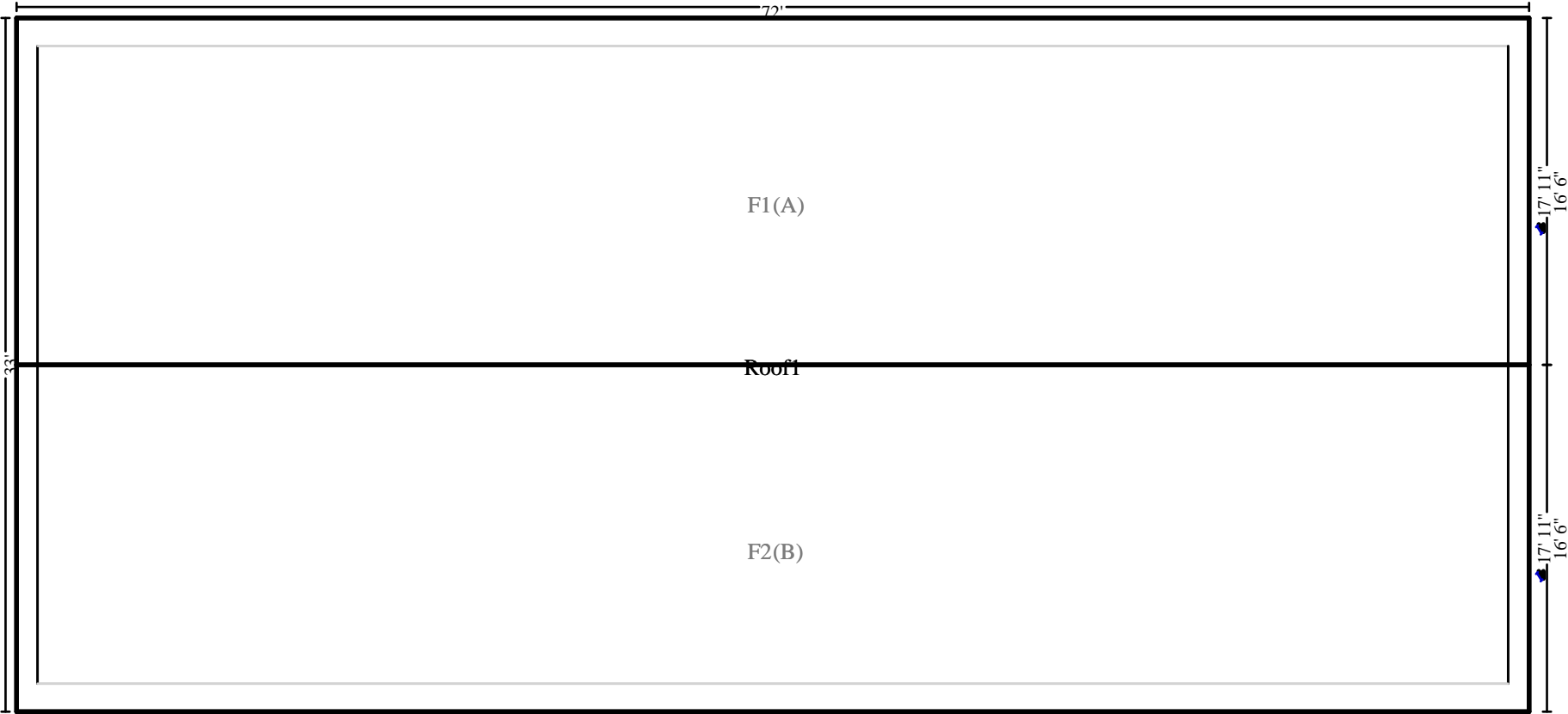
Main Level



Main Level



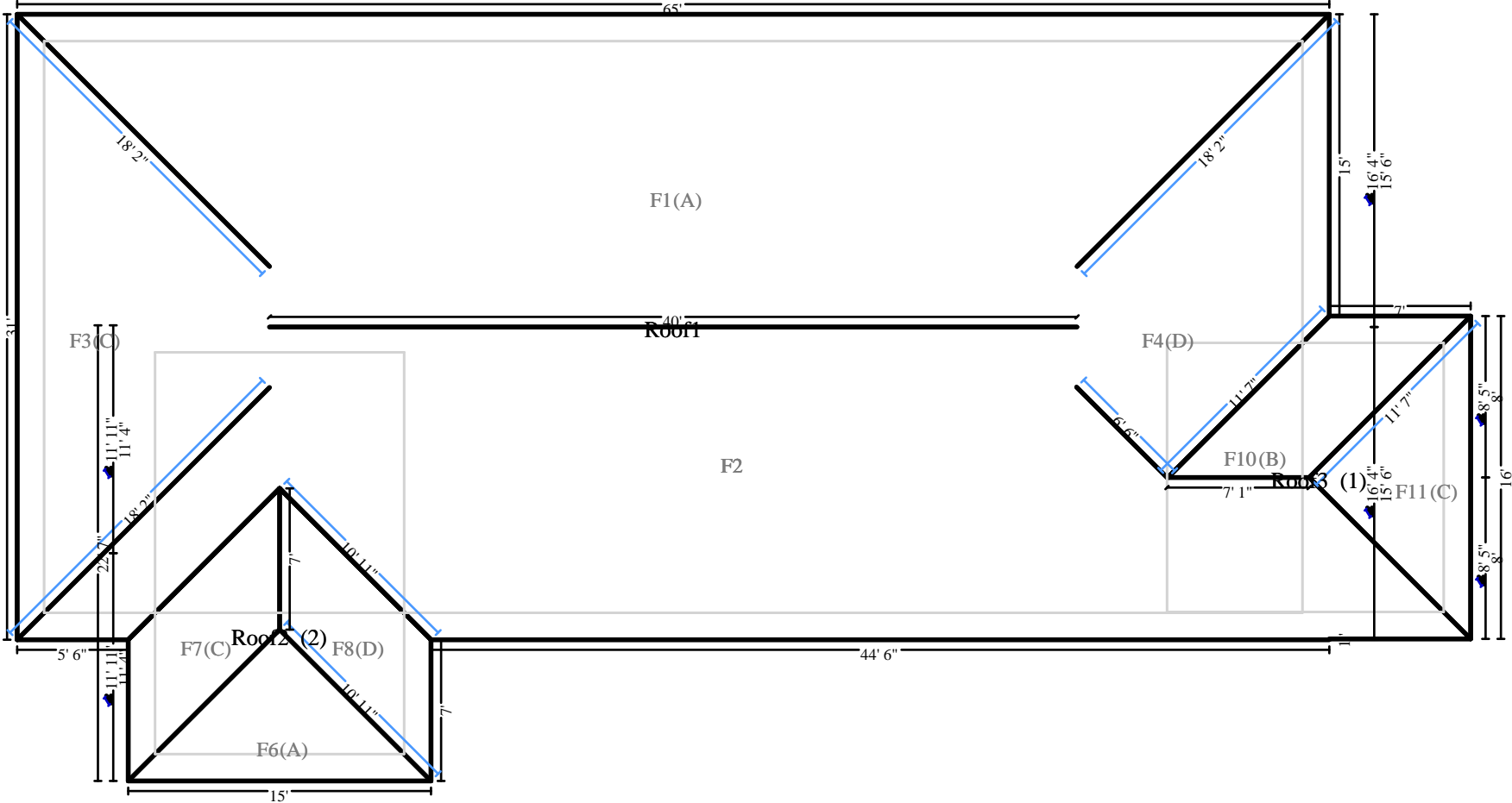
Main Level



Main Level



Main Level



Main Level

